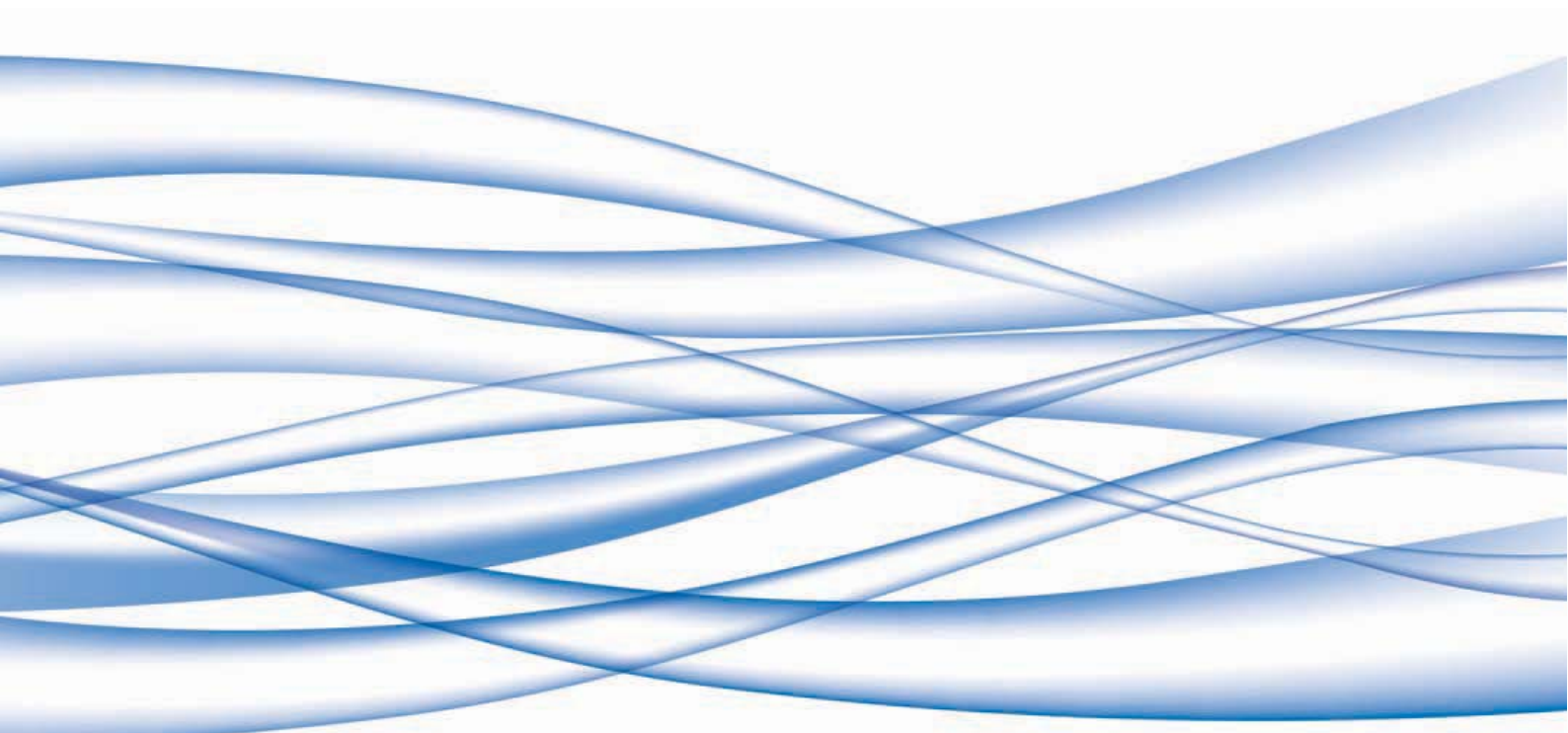


Energy Management Equipment

ULTRA



When is ULTRA needed?

Worldwide electricity costs are continuing to increase year on year.

ULTRA's power saving performance **will significantly REDUCE your ELECTRICITY COSTS.**

Organizations are increasingly faced with an urgent need to reduce energy consumption and costs while ensuring key business processes remain unaffected - ULTRA provides a simple solution that delivers financial savings and reduces your organization's environmental impact.

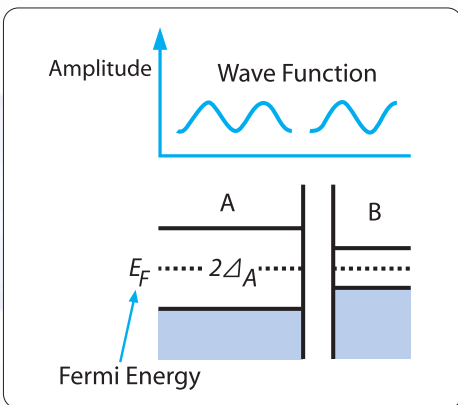
Reducing energy consumption is now not only a moral responsibility in terms of protecting the environment we live in but also with energy prices rising rapidly, it is an economic necessity.

What is ULTRA's new technology?

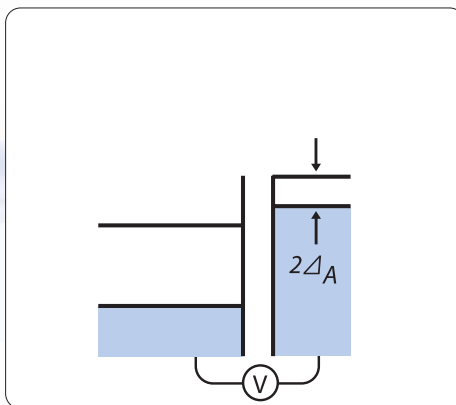
"The World's First Electrical Current Optimization System"

ULTRA is a revolutionary solution that utilizes the latest current optimization technology to deliver exceptional energy savings without the need for voltage reduction.

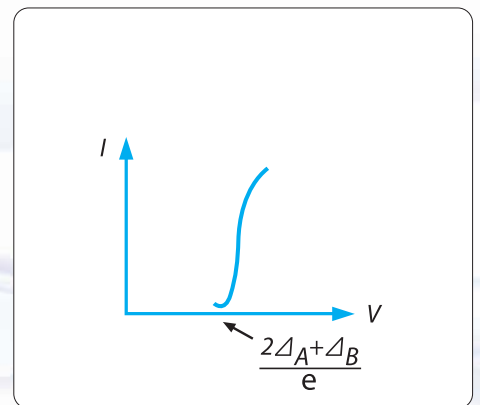
■ ULTRA New Technology Principle



Superconduction junction, A and B
Holds energy gap of $2\Delta_A$ and $2\Delta_B$

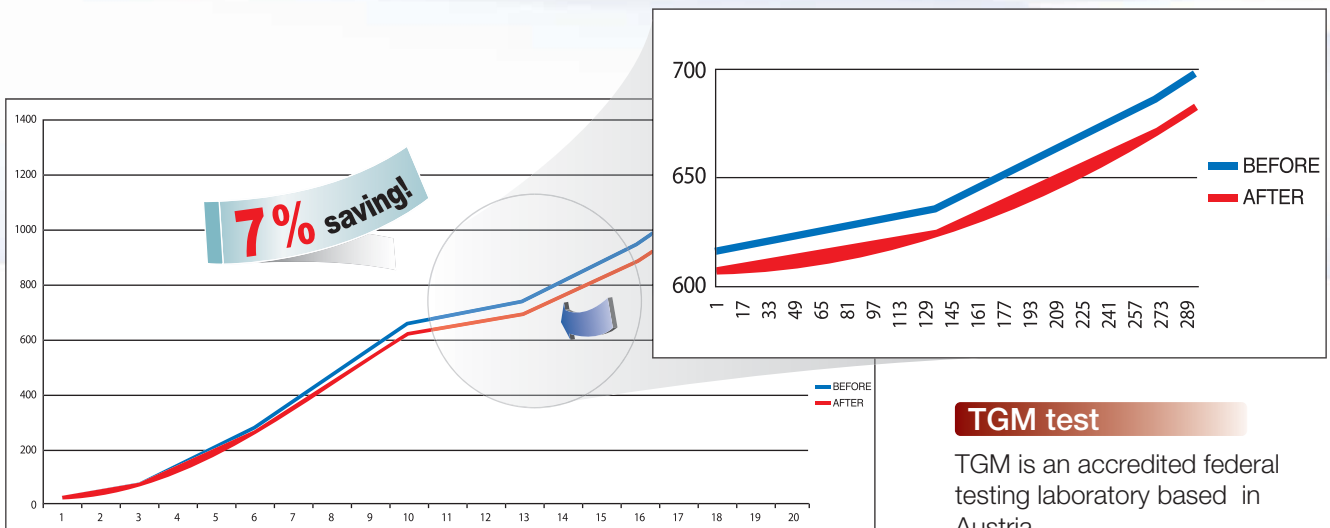


The energy level transfers on
Electric potential



I (Electric current) and V (Voltage)
conjugation curve

Official TGM tests show a minimum 7% saving



TGM test

TGM is an accredited federal testing laboratory based in Austria.

Where to install ULTRA?

ULTRA is suitable for all electricity users.

ULTRA is highly effective at achieving energy savings in industrial, commercial and domestic installations.



Shipyard in Greece U-300, UC-50 (4ea), UR-30, UR-20



Hypermarket in Colombia U-1000 (2ea)



Hospital in Greece U-500



Building in Korea U-1000, U-500, U-300



Factory in Greece U-1500



Supermarket in Ireland UC-100

Who ULTRA works for?

► Power saving rates for different varieties of load

L load (Inductive load) : power saving rate - Minimum of 11%, increase in efficiency

R load (Resistance load) : power saving rate - Maximum of 3%, increase in efficiency

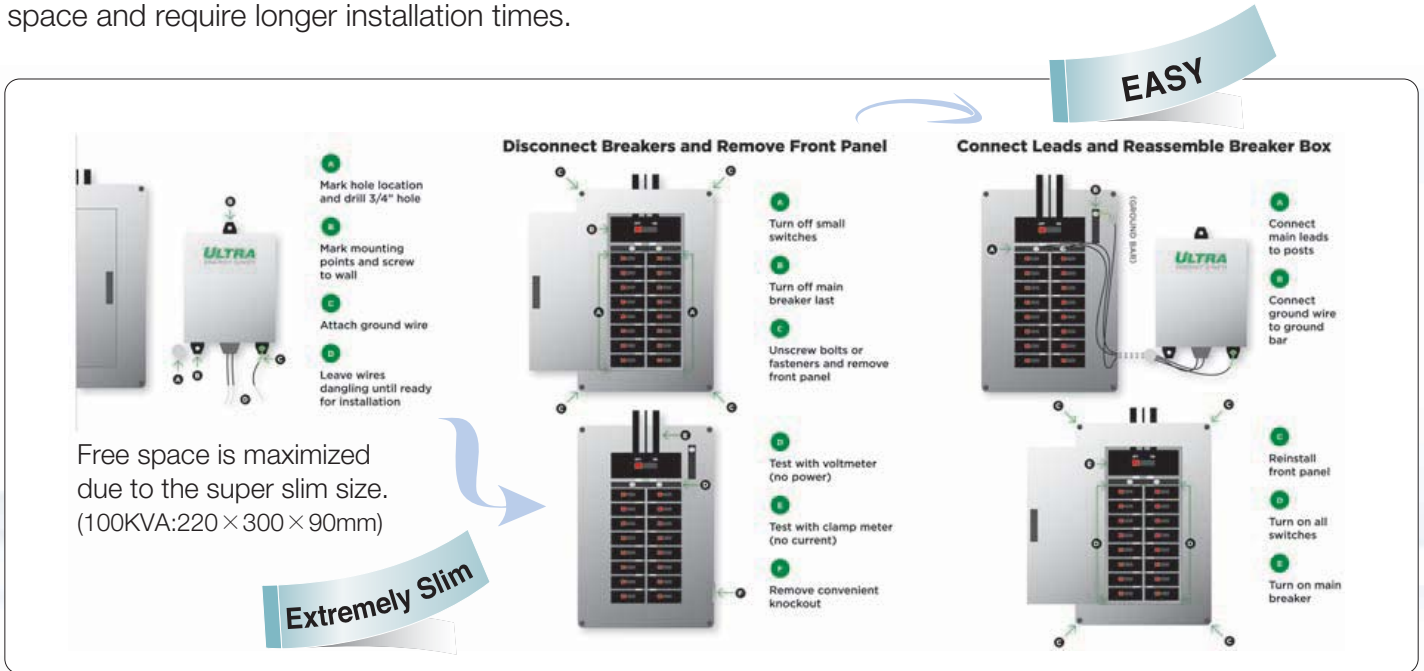
Complex load (L load + R load) : power saving rate - Minimum of 5%, increase in efficiency

► ULTRA operates most effectively for organizations using both inductive and resistive loads

- Ideally your inductive/resistive load ratio will be more than 60:40
- Inductive loads include motors, air-conditioning, refrigeration, compressors etc..
- Numerous organizations have the ideal complex loads including office buildings, factories, supermarkets, and domestic residences. These optimum loads include:
 1. Loads where the load factor exceeds 70% - Power saving rates increase when equipment performance is maximized
 2. Loads where the demand factor exceeds 60%
 3. Inductive loads where fluctuating current results in increased resistance.

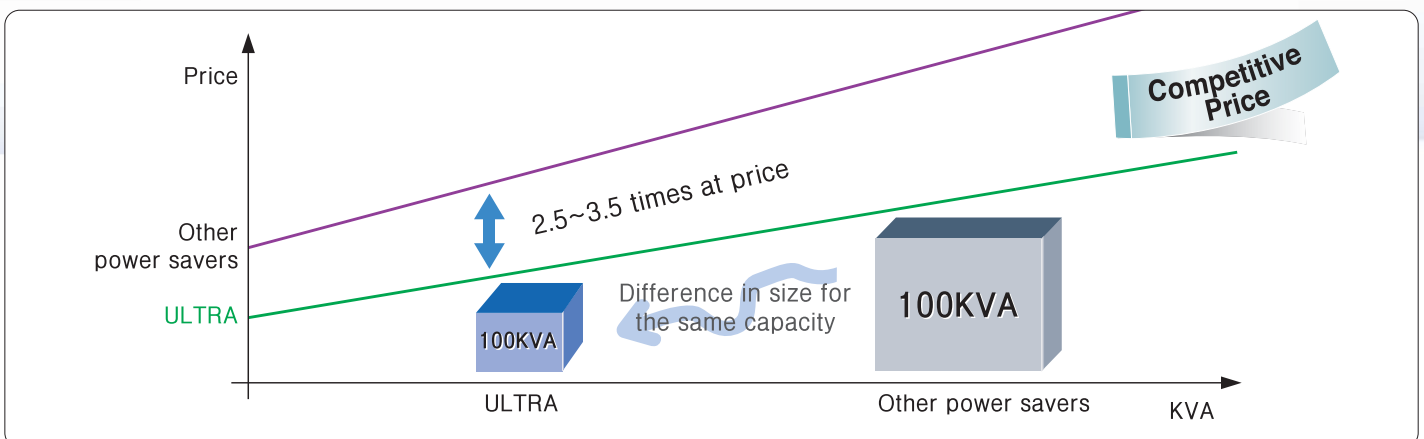
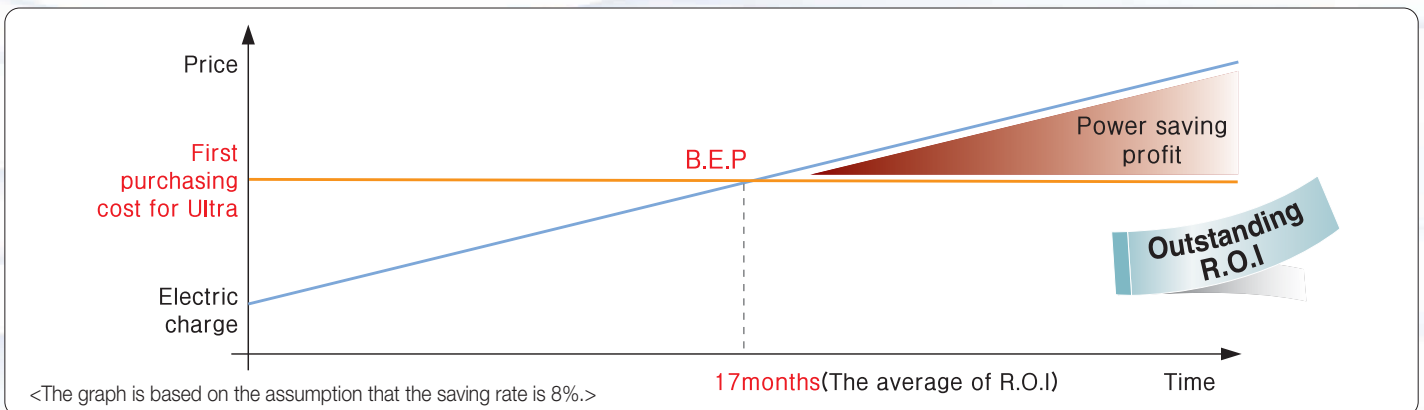
How to install ULTRA

Installation is simple and quick - ULTRA can be installed in most locations in under 20 minutes. This is a considerable improvement over older less efficient technologies that can take up significant amounts of space and require longer installation times.



Why our clients choose ULTRA?

When compared with other power saving technologies, ULTRA is competitively priced. Combined with the significant savings, the ULTRA solution has an accelerated return on investment.



“Every dollar saved in cost is a dollar added to your bottom line profit!”



use	Model No.	In-put	Voltage	Hz	Size (W×L×H cm)	Weight (Kg)	capacity (KVA-AC)
Main TR	U-1500	3Ø	100V~600V	50Hz~60Hz	40×60×25	50	1500
	U-1000				40×60×20	40	1000
	U-700				35×52×15	27	700
	U-500				35×45×15	25	500
	U-300				30×40×10	15	300
Commercial	UC-200	3Ø, 1Ø			25×35×8	11	200
	UC-100				22×30×8	8	100
	UC-50				18×25×6	5	50
Residence	UR-30	1Ø			14×20×6	3.5	30
	UR-20				13×20×6	2.7	20
	UR-10				13×18×5	2.3	10
	UR-7				11×17×4	1.6	7
	UR-5				9×10×4	1	5
Module	UM-1	1Ø			8×11×3	0.8	1
	UM-0.5				6×10.3×3	0.6	0.5



KESECO is enthusiastically dedicated to delivering
the latest energy saving technology.

It will be the best partner to maximize your business savings.



KESECO Co., Ltd.

Head office & Factory : 8F, NamYoung Digital-tower,
284-49, SungSuDong-2Ga, SungDong-Gu,
Seoul, Korea 133-120

TEL : 82-2-3409-1105 / FAX : 82-2-3409-2106



● Technology Revolution ●

ULTRA

KESECO

The World's First Current Improvement
Energy Management Equipment